

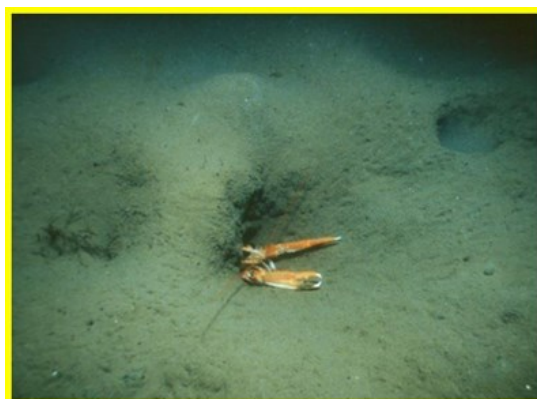


Consiglio Nazionale delle Ricerche
ISMAR - Istituto di Scienze Marine
U.O.S. di Ancona
Largo Fiera della Pesca, 1 – 60125 Ancona, Italy
Tel +39 071 207881 Fax +39 071 55313
segreteria@an.ismar.cnr.it
C.F. 80054330586 - P.IVA 02118311006



**Mercoledì 14 Marzo 2018 - ore 12:00 SALA RIUNIONI
SEMINARIO**

“ADRIATIC UWTV SURVEYS and Pomo monitoring activity”



MICHELA MARTINELLI (*et al.*)

CNR – ISMAR Ancona

ABSTRACT

Since 2009, CNR – ISMAR of Ancona (Italy) and IOF of Split (Croatia) joined forces under the auspices of FAO – ADRIAMED, in order to apply, in the central Adriatic Sea, the UWTV methodology, which is a fishery-independent method used to estimate Nephrops burrow densities as an index of abundance. Except for 2011, a spring survey was carried out yearly from 2009 to 2017 in the entire Pomo/Jabuka area. Since 2015, some protection measures were implemented in this area, which is very important not only for Nephrops norvegicus but also for Merluccius merluccius. The UWTV methodology is considered a standard for monitoring in various ICES countries and both CNR-ISMAR and IOF are nowadays part of an ICES working group dealing with this subject, thus ICES developments are strongly applied to the Adriatic UWTV survey procedures. During the survey, additional trawl hauls are carried out by means of an experimental net (at sunrise and sunset) in order to obtain demographic and biological data relating to the Nephrops population and to other important species. Recently a new database was developed making easier to perform readers' check, statistics, thresholds setups (e.g. speed, turbidity...), application of biases (e.g. edge effect, fixed bias...), post stratification experiments (e.g. using the new regulated areas), preparation of data for an ecosystem approach etc.

In the framework of an agreement between MIPAAF and CNR-ISMAR for the evaluation of the management measures enforced in the area, since 2015 an additional autumn trawl survey is carried out with the same experimental net only in the western side of the Pomo Pits area. Autumn survey is aimed at evaluating also the status and the recruitment of species with defined (blue whiting), multiple or longer (hake and white shrimp) breeding season. Two new surveys in the area are planned for spring and autumn 2018.

SEDE ISTITUTO
Castello 1364/a
30122 Venezia
Tel. +39 041 2404711
Fax +39 041 5204126
segreteria@ismar.cnr.it

Bologna
Via P. Gobetti, 101
40129 BO
Tel +39 051 6398891
Fax +39 051 6398939
segreteria@bo.ismar.cnr.it

Genova
Via De Marini, 6
16149 GE
Tel +39 010 64751
Fax +39 010 6475400
segreteria@ge.ismar.cnr.it

Lesina
Via Pola, 4
71010 FG
Tel +39 0882 992702
Fax +39 0882 991352
segreteria@fg.ismar.cnr.it

Pozzuolo di Lerici
Forte Santa Teresa
19032 SP
Tel +39 0187 978300
Fax +39 0187 970585
segreteria@sp.ismar.cnr.it

Trieste Francesco Vercelli
Viale Romolo Gessi, 2
34123 TS
Tel +39 040 305312
Fax +39 040 308941
segreteria@ts.ismar.cnr.it