

Consiglio Nazionale delle Ricerche

ISMAR - Istituto di Scienze Marine

U.O.S. di Ancona

Largo Fiera della Pesca, 1 – 60125 Ancona, Italy

Tel +39 071 207881 Fax +39 071 55313

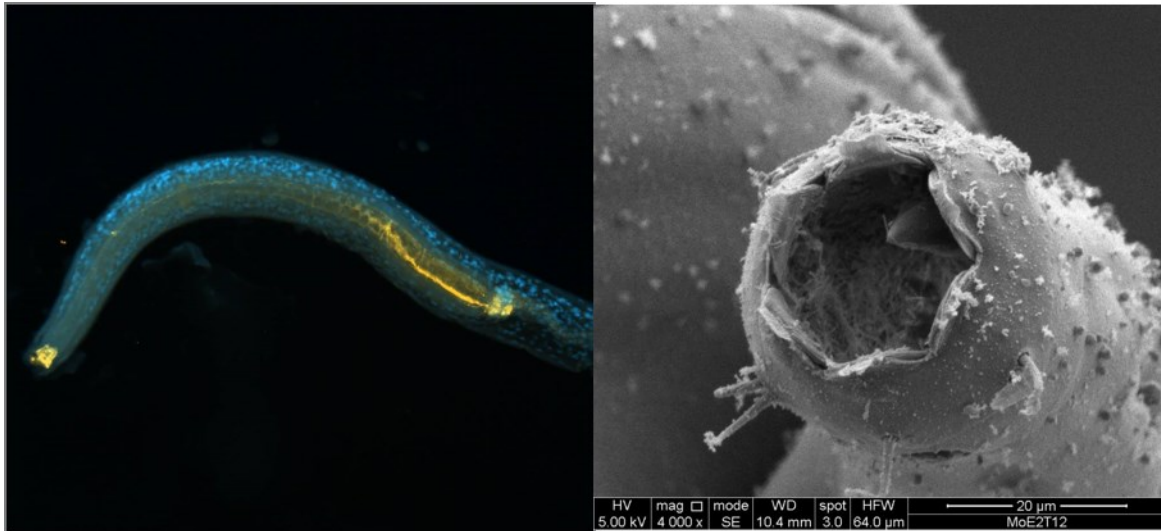
segreteria@an.ismar.cnr.it

C.F. 80054330586 - P.IVA 02118311006



Martedì 9 Gennaio 2018 - ore 14:30 SALA RIUNIONI

SEMINARIO



***Prokaryote-nematode Interaction in marine extreme environments:
a uNique source for ExploRation of innovative biomedical applications***

DANIELA ZEPELLI

(INSTITUT FRANÇAIS DE RECHERCHE POUR L'EXPLOITATION DE LA MER)

ABSTRACT

Nematodes are the most abundant and diversified metazoans in terrestrial and marine ecosystems. In their natural environment, nematodes are exposed to bacteria, viruses and fungal pathogens. Although terrestrial nematodes, have been used for the past few years as a model host for the study of the molecular basis of innate defenses, little is known about nematode/prokaryote interactions in marine environments, and even less in marine extreme environments. The discovery of abundant and well-adapted nematode communities in several extreme environments has opened new frontiers in the ecology and biology of the species thriving there. Prokaryotes and nematodes are both very abundant and co-occur in marine extreme ecosystems supporting a communication network of small signalling molecules of potential utility and/or of innate defences.

SEDE ISTITUTO
Castello 1364/a
30122 Venezia
Tel. +39 041 2404711
Fax +39 041 5204126
segreteria@ismar.cnr.it

Bologna
Via P. Gobetti, 101
40129 BO
Tel +39 051 6398891
Fax +39 051 6398939
segreteria@bo.ismar.cnr.it

Genova
Via De Marini, 6
16149 GE
Tel +39 010 64751
Fax +39 010 6475400
segreteria@ge.ismar.cnr.it

Lesina
Via Pola, 4
71010 FG
Tel +39 0882 992702
Fax +39 0882 991352
segreteria@fg.ismar.cnr.it

Pozzuolo di Lerici
Forte Santa Teresa
19032 SP
Tel +39 0187 978300
Fax +39 0187 970585
segreteria@sp.ismar.cnr.it

Trieste Francesco Vercelli
Viale Romolo Gessi, 2
34123 TS
Tel +39 040 305312
Fax +39 040 308941
segreteria@ts.ismar.cnr.it